



# ROCHESTER

## *3 DAY Self Drive Itinerary*

Why this small  
**VICTORIAN  
TOWN** *is worth  
more than a one-hour stopover*





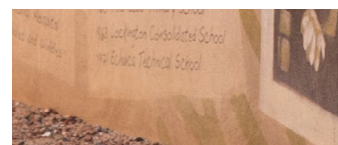
Located a leisurely two hour drive from Melbourne, *Rochester* sits on *Dja Dja Wurrung country*, deeply grounded on the banks of the Campaspe River.

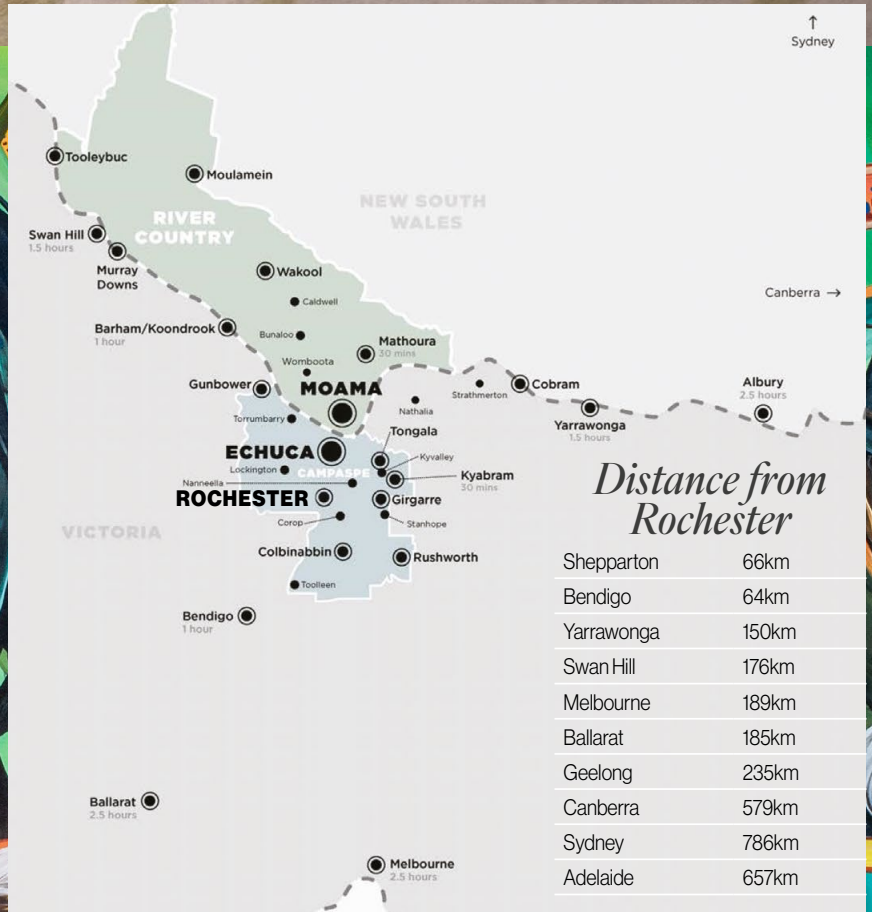
Beautiful Rochester is a welcoming embrace that connects visitors to the mighty Murray region.

Though small in size, Rochester is packed with things to discover. Inspired by a vibrant arts community and iconic local legends, Rochester is no longer simply a place to pass through on the way to Echuca - it is a place to stay a while, settle in, live like a local, and begin your Murray adventure.

Rich in history, art and nature, Rochester invites you to engage with its stories as you explore an outdoor gallery of painted silos, murals, street art, wood carvings, statues and sculptures, with more than 50 exhibits throughout town.

Relive some of Australia's most memorable sporting moments at the Rochester Sports Museum, then spend time in nature's gallery, where wild and roving exhibitions are always on display. Rochester is part of the Victorian Silo Art Trail, with the local section featuring artworks in Rochester and Colbinabbin. Stay a while in Rochester - we look forward to welcoming you.





### Getting to Rochester:

Rochester is two hours north of Melbourne. The main route from Melbourne to Rochester (189km) is the Northern Highway.

We want our visitors to arrive in town safely for a wonderful holiday – so be sure to plan ahead, pull over and recharge during your trip.

### Who this itinerary is for:

This three-day, two-night self-drive itinerary has been designed for adults and is ideal for a long weekend in Rochester, from Friday through to Sunday, though it can easily be enjoyed at other times.

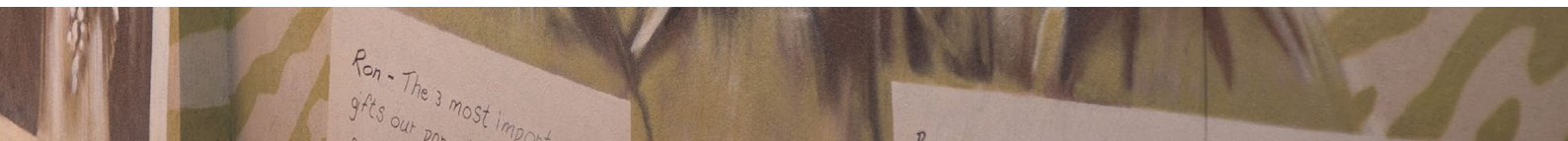
If you enjoy art, history, nature and the charm of welcoming small towns, this itinerary is for you. You may have driven through Rochester many times on your way to the Murray, but now is the perfect time to stop, stay a while, and spend a night or two exploring the town and its surrounds at a relaxed pace.

### Guide to itinerary:

Pricing for attractions is under the heading "All You Need To Know". Pricing guide for accommodation and meals is identified by a scale of low to high – using \$, \$\$, and \$\$\$ to identify general price range information.

### Where to Stay:

To help you decide where to stay, we've suggested four accommodation options across a range of styles and price points that suit both the traveller and the experiences featured in this itinerary.



# DAY 1

## Friday



LEFT:  
Iddles Lane

### *Morning:*

Arriving in Rochester around midday after your two-hour drive, it's time for some lunch, so head to The Café Rochester. Alongside delicious home-cooked meals and warm country hospitality, you'll also find artworks and collectibles displayed throughout the café, all available to browse and purchase.

### *Afternoon:*

After lunch, visit the Rochester Historical & Pioneer Society Museum on High Street. Explore artefacts, photographs, early newspapers, farm machinery and dairy displays, and gain an insight into life in Rochester from early European settlement through to today.

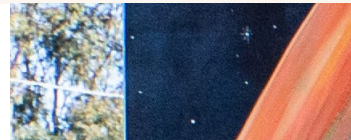
From there, take a relaxed stroll through Rochester's Outdoor Gallery. Begin at the impressive Rochester GrainCorp Art Silo and admire the skill of mural artist Jimmy Dvate. The silos tell the story of four threatened local species - the azure kingfisher, wrist-winged squirrel glider, duck-billed platypus and New Holland honeyeater.

## *LOCALS TIP*

Keep an eye out when you are on the Campaspe Riverwalk – you might be lucky enough to see the real-life version of these artworks!

Spend the remainder of the afternoon following the Rochester Mural Map and discovering the many artworks, murals and wood carvings dotted around town. Highlights include Mural Park, featuring works from the annual Rochester Mural Festival, and Iddles Lane, which tells the story of Rochester legend, former Homicide Detective, Ron Iddles, through artwork by mural artist Tim Bowtell.

It's time to check in to your accommodation, put your feet up for a while and prepare for your next adventure.





**LEFT:**  
Shamrock Hotel

**BELOW:**  
Wood Carvings of  
Squirrel Gliders, at  
Town Hall



### *Evening:*

Dinner tonight is at the historic Shamrock Hotel. Located on the corner of Gillies and Moore Streets, this grand Victorian-style building is full of character. Pull up a stool with the locals and listen out for a few yarns — and some hidden gems you won't hear anywhere else.

The Shamrock serves more than just a pub meal. It is quality on a plate with creative weekly specials using seasonal local produce, all delivered with Rochester's trademark country hospitality. The specials are always worth a look, even if your go-to is a parmi.

Before heading back to your accommodation, take another look at the silo art after dark – illuminated, it is a completely different experience at night.

### *Day ONE: All you need to know:*

The Cafe Rochester,  
61 Mackay Street, Rochester.  
Open 7.30am to 2pm Monday  
to Friday and 7.30am to  
11.30am Saturday.

*Price range is \$ to \$\$*

Rochester Historical & Pioneer  
Society Museum,  
96-98 High Street, Rochester.  
Open on Wednesday and Friday or  
by appointment.

*Entry cost is a donation*

Rochester Mural Park & Trail,  
off Moore Street, Rochester.

*Free entry, open all hours*

Iddles Lane,  
next to 11-13 Gillies Street,  
Rochester

*Free entry, open all hours*

Shamrock Hotel,  
1 Gillies Street, Rochester.  
Bistro open for dinner Wednesday  
to Saturday 6pm to 8pm.

*Price range is \$ to \$\$*



# DAY 2 Saturday

## *Morning:*

Start the day by enjoying the quiet beauty of the Campaspe River at sunrise as it slowly comes to life. Choose your own pace – bring your own kayak or paddleboard to travel on calm waters, cast a line from the accessible pontoon, or enjoy the 2km Campaspe River trail walk.

## *LOCALS TIP*

Keep an eye out for the nesting boxes built for squirrel gliders along the way.

Later, stop at Rochester Bakery for a late breakfast - because no country town visit is complete without a trip to the local bakery - Rochy's is known for its delicious vanilla slice!

After breakfast, jump in the car for the 20 minute drive to the Colbinabbin Art Silos and marvel at the six silo work-of-art by artist Tim Bowtell, who also created Rochester's Iddles Lane. The silos were painted in 2020 and tell the stories of significant moments from the town's history, including its important links to agriculture, community, environment and the construction of the railway.

Another 10 minutes down the road you'll find yourself in wine country - the northernmost part of the Heathcote Wine Region to be exact. Shiraz Republic, located at Cornella, is your destination.



**TOP:**  
Accessible Campaspe River

**RIGHT:**  
Rochester Bakery

**BOTTOM:**  
Colbinabbin Art Silos



## *Afternoon:*

From humble beginnings, Shiraz Republic has grown from small vineyard to a leading tourism attraction in the region, with its large cellar door offering live music every weekend and home to its own brewery and accommodation options. Grab a table in the outdoor area, enjoy a delicious wood fired pizza for lunch and take in the live entertainment. Surrounding the cellar door are the artefacts, sheds and farm equipment of the historical farm and post office of Cornella, established originally in the 1880s, so stick around for a tour of the local history. And don't forget to load up the car with a drop or two before you take the easy 30 minute drive back to Rochester.

## *Seasonal detour: Cornella Canola Walk*

Every spring, the paddocks around Colbinabbin and Cornella transform into a sea of bright yellow canola flowers. Cornella Canola Walk at Shiraz Republic offers visitors a rare chance to step inside a 40 hectares canola field, via specially cut walking tracks and a scenic viewing platform. This is Victoria's only walk-through canola experience, designed to protect the crop while allowing photographers, nature lovers and day-trippers to capture the stunning landscape up close. After your walk, enjoy wine tasting at the working winery, sample craft beer from Cornella Brewery, or relax with a woodfired pizza overlooking the vines.

## *Evening:*

After freshening up at your accommodation, head over to the newly opened Local 3561 for dinner and drinks. This 150-year-old commercial hotel building has been lovingly renovated to indulge visitors and residents with local food, local drinks and local community. Chef Mick's weekly specials always feature a welcome surprise, alongside all your favourite pub classics.

## **BELOW:**

Shiraz Republic

## *Day TWO: All you need to know:*

Campaspe River Pontoon,  
access via Rochester Riverside  
Holiday Park, 1 Church Street,  
Rochester.

*Access is available at all times  
and there is no cost.*

Campaspe River Walk,  
access off Campaspe Street,  
Rochester.

*Access is available at all times  
and there is no cost.*

Rochester Bakery,  
46 Moore Street, Rochester.  
Open 7am to 4pm Monday to  
Saturday.

*Price Range is \$*

Colbinabbin Silo Art,  
Meade Lane, Colbinabbin.

*Access is available at all times  
and there is no cost.*

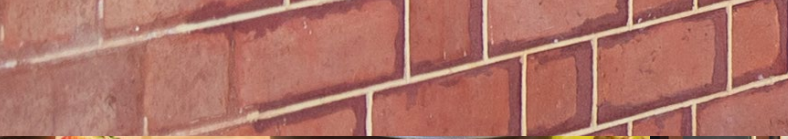
Shiraz Republic,  
507 Hamblin Road, Cornella.  
Open 11am to 5pm Friday to Sunday  
or by appointment.

*Price range is \$\$*

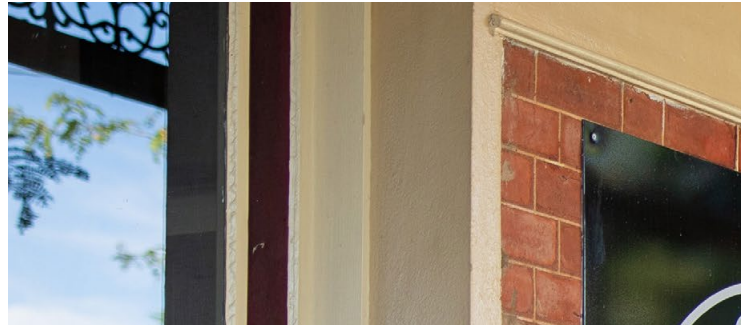
The Local 3561 Commercial Hotel,  
49 Moore Street, Rochester.  
Open Thursday to Sunday from  
11am until late each day.

*Price range is \$ to \$\$*





# DAY 3 Sunday



## Morning:

Ease into the day grabbing a coffee and breaky to go from 7 Beans Coffee, and head to rotunda park for a relaxing breakfast with silo art views.

After breakfast, stroll down Moore Street to the Rochester Sports Museum, stopping along the way at the statue of Sir Hubert Opperman, Rochester's famous Tour de France cyclist and politician. Known affectionately as "Oppy", he held more than 100 cycling records and was voted Europe's most popular sportsman in 1928.

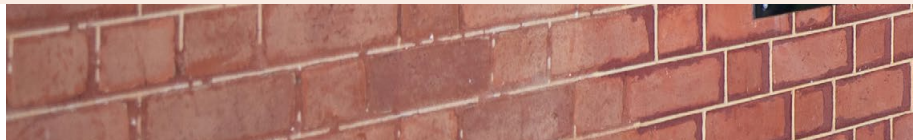
Spend time browsing the one-of-a-kind collection of exhibits inside the Rochester Sports Museum, housed in the railway station building. Highlights include gloves worn by Adam Gilchrist, a hat belonging to Greg Norman, Merv Hughes' knitted vest and helmet, and a dress worn by Martina Navratilova at the Australian Open. Relive some of Australia's most memorable sporting moments.

## LOCALS TIP

Make sure you take the time to watch the video of sports memorabilia collector, John Forbes. He brings these stories to life!

No visit to Rochester feels complete without stopping by the Rochester Fish Shop — a much-loved local institution that has been in the same family for more than 50 years. Pick up a classic fish and chips lunch and make your way to Campaspe Park, where you can settle in beside the water and enjoy one last relaxed riverside meal as your time exploring Rochester and its surrounds comes to an end. It's easy to see why this small town leaves such a lasting impression.

TOP:  
Rochester Sports Museum



## *Day THREE: All you need to know:*

7 Beans Coffee,  
5 Gillies Street, Rochester.  
Open from 7am to 2pm Monday  
to Friday and 8am to 1pm on  
Saturday and Sunday.

*Price range \$*

---

Rochester Sports Museum,  
22-26 Moore Street, Rochester.

Open from 10am to 4pm  
Thursday to Sunday.

*Entry is \$5 per person (children free)*

Sir Hubert Opperman Statue,  
opposite Rochester Sports  
Museum, 22-26 Moore Street,  
Rochester.

*Access is available at all times and  
there is no cost*

---

Rochester Fish Shop,  
63 Mackay Street, Rochester.  
Open daily from 11am to 8pm.

*Price range is \$*



**RIGHT:**

Sir Hubert Opperman Statue

**BOTTOM:**

The Local 3561 Commercial Hotel



# *SUGGESTIONS* *for your journey home.*

If you're continuing north on your journey, we suggest you travel on to Echuca Moama, just 25 minutes from Rochester. Cruise the Murray River aboard an historic paddlesteamer, explore the wine trail, connect with nature on the walking and cycling trails, browse the many galleries and museums, and watch the sun go down beside a riverside campfire.

For those heading south, why not call in at Elmore, just 15 minutes down the road. A small town with a big heart, Elmore is home to the Campaspe Run Rural Discovery Centre - Elmore's tribute to the Sunshine Harvester, our early pioneers and the sheep and grain industries.

We bid you farewell, safe travels and hope to see you again soon in Rochester.



# ITINERARY HIGHLIGHTS:

## Day 1:

Rochester GrainCorp Art Silo

Rochester Mural Trail, including Mural Park and Iddles Lane

## Day 2:

Campaspe River Sunrise - choose your own adventure - kayaking, fishing or walking trail

Shiraz Republic

## Day 3:

Rochester Sports Museum

Sir Hubert Opperman Statue



### RIGHT TOP:

Rochester Riverside Holiday Park

### RIGHT:

Rochester Motel

## *Rochester Motel*

The Rochester Motel offers comfortable and affordable accommodation with all the creature comforts of home. Each room includes the convenience of a fridge, toaster, microwave, kettle and complimentary tea and coffee to help make your stay more enjoyable. There is also an inground pool, BBQ facilities, spacious lawn and outdoor eating area. A stone's throw from the silo art.

*Price Range is \$\$*

## *Rochester Riverside Holiday Park*

Located on the banks of the Campaspe River with absolute river frontage, the Rochester Riverside Holiday Park offers powered and non-powered sites (including ensuite and river frontage sites), as well as deluxe cabin accommodation. Hire a kayak from the park and launch it from the pontoon ramp, or wet a line from the riverbank. Friends of the furry kind are also welcome. Located an easy two minute walk from all the attractions, shops and cafes.

*Price range is \$ to \$\$*



## *Rochester Caravan Park*

Located within an easy walk of the Campaspe River Walking Track and a short walk to the town centre and Mural Park, the Rochester Caravan Park features accommodation ranging from caravan & camping sites to budget and luxury cabins.

*Price range is \$ to \$\$*

## *The Shiraz Republic*

Looking for something a little more rural and peaceful? A short 30 minute drive from the centre of Rochester you will find Shiraz Republic, offering vineyard views, a series of private fully self-contained units with decks overlooking the vineyard. One and two bedroom units are available.

*Price range is \$\$*